



## About Us

We bring innovations and meaningful improvements to our Clients' everyday work environments.

We inspire change by helping to identify challenges and work together to solve them.

By designing intelligent business models supported by modern technology, we help organizations operate more effectively. Our business expertise and IT solutions drive real, lasting transformation.

+130

Team members

+40

Countries

+70

Clients

+18

Years on the market

## Key areas of our expertise

### Business Consulting

- Business advisory
- Analysis and process optimization
- Project management

### SAP and ERP systems WorkDay, PeopleSoft

- Implementation
- Integration with other systems
- Maintenance

### Digital Transformation

- Process digitalization and automation
- Artificial intelligence
- Custom development

# Business Consulting

Benefit from our knowledge and experience

- **Business transformation consulting services**
  - Business process analysis, modelling, optimization and standardization
  - Post- merger integrations
  - Comprehensive support for Shared Services Centres
- **IT system analysis**
  - Process analysis and advisory in strategic decision-making
  - Advisory services prior to the implementation of RPA, workflow, and other solutions
  - Continuous improvement and change management: organization, processes, and tools
- **Project management**

”

*Changes lead to improvement if executed correctly. We remodel business processes and introduce innovations to help you make the most of emerging opportunities.*



**Monika Matyjek – Góra**  
Head of Business Consulting



**Tomasz Jędrzejczyk**  
COO, Head of SAP Department

# ERP Systems: SAP, Workday, PeopleSoft

Plan and work efficiently in real time

**Our functional and technical expertise allows us to deliver optimal solutions in:**

- Purchasing and selection of modules
- Implementations
- Development
- Integrations
- Data migrations
- Rollouts

”

We have completed numerous consulting and implementation projects for SAP, Workday and PeopleSoft Financials and supply chain management systems.

# SAP services



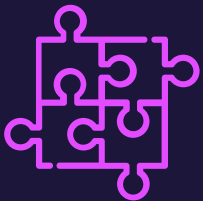
## ERP system implementation

Implementation of SAP S/4HANA, the latest ERP solution, configured to meet your specific business needs.



## SAP environments transformation

Migration to S/4HANA, business reorganization projects, mergers and carvout.



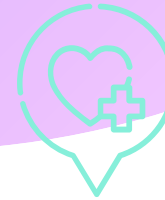
## SAP compliance with local regulations

Implementation of eInvoice (KSeF), SAF-T (JPK), VAT white list, split payments, and regulatory reporting requirements



## ERP support and development

SAP Managed Services, system administration, user support, and implementation of new functionalities.



## SAP HelpDesk Hub

Arc provides end-to-end SAP support, including user assistance/ ticket processing, system administration, troubleshooting, and ongoing enhancements



## SAP Modules

Arc delivers projects across various SAP modules, including SAP FI/CO (Finance and Controlling), MM (Materials Management), SD (Sales & Distribution), and more.



# Digital Transformation

A „must-have” for every organization

## The essence of smart automation in simple steps:

- Review key areas and processes, considering existing IT tools and the business's specifics.
- Identify opportunities for process improvement beyond RPA, such as changes to core system configurations or usage.
- Provide a list of suggested changes and an implementation roadmap that aligns with business priorities, including documentation and process maps for both current and future states.
- Define an implementation strategy and select the right RPA technologies.

”

*We transform business processes to enhance company efficiency and profitability. Our product, Archee boosts efficiency, freeing up resources and creativity*



**Sławomir Kubit**  
Head of Digital Transformation

# Archee automation and workflow

We created a product that enables the automation of business processes using the tools and systems that your company already has.



Business processes  
digitalisation and workflow

**100+**

Implementations



(Robotic Management Center)  
automations monitoring  
and controlling

**8**

Implementations with  
350 Archee Robots



Business processes  
automation

**950+**

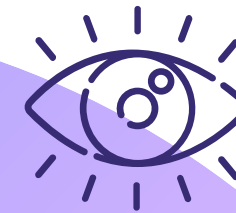
Archee Robots

# Archee Flow is primarily used for / as

Solution enabling remote work

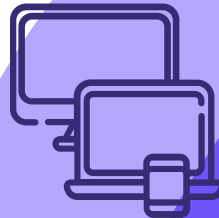


Process automation  
or as a prerequisite  
for process automations



Process monitoring and  
controlling (to be able to track the  
processes, see bottlenecks etc.)

Process digitalization  
and standardization



Workflow solution with  
approval in process



## Finance processes digitalized with Archee Flow

- AP Platform (Accounts Payable invoices workflow)
- AP HelpDesk (workflow for Vendor inquiries)
- Vendor Portal (under construction)
- Vendor Master Data
- Payment Terms Change
- Manual Payment Requests

- Manual Invoice Request
- Journal Entries / Vouchers
- Intercompany Recharges
- Recon Tool  
(solution supporting account reconciliations)
- Retail Differences

## Non - finance processes digitalized with Archee Flow

- Leave Requests (HR)
- Recruitment (HR)
- HelpDesk / Incident Management System
- Project Management Center
- Rosie – process review for SOD (Segregation of Duty) / conflicts related to SAP roles
- Application for monitoring the installations of POS (Point of sale)
- ARCPedia (process knowledge repository incl. Interactive process maps)





**Piotr Dziurzyński**

Head of Sales



+48 661 616 516



[www.arc-consulting.pl](http://www.arc-consulting.pl)



[info@arc-consulting.pl](mailto:info@arc-consulting.pl)

Make Your Business **SMART**

